

■ Outline of PREX

Pacific Resource Exchange Center (PREX)

● Government Agency of Jurisdiction:

The Cabinet Office

● Employees:

22 persons

● Awards and Commendations Received:

JICA, Award for Excellence in International Cooperation (2000)

Kansai Economic Federation, Excellence Award (2008)

Japan Ministry of Foreign Affairs, Foreign Minister's Commendation (2008)

Osaka City, Mayor's Commendation for "Leading Company for Promoting Women in the Workforce" (2021)

Kansai Economic Federation, "Kankeiren ASEAN Management Training Program" Letter of Appreciation (2021)

Osaka Prefectural commendation for gender equal enterprises "Gender Equal Iki-iki Excellence Award" (2022)

■ PREX History

● 1984

The Kansai Association of Corporate Executives (KACE) facilitated a team to conduct research in the Pacific Ocean countries. KACE proposed that Japan focus international cooperation on human development and announced a plan to establish the "Management and Technology Exchange Center."

● 1988

The 6th Pacific Economic Cooperation Council (PECC) General Meeting in Osaka:

The idea of establishing an industry-government-academia representative organization to facilitate human development cooperation in the Asia-Pacific was proposed by Kansai Economic Federation President, Mr. Uno. A preparatory committee and executive council for establishing the organization was created.

● April 26, 1990

Obtained approval for establishment from the Minister of Foreign Affairs and the Minister of International Trade and Industry.

Pacific Resource Exchange Center (PREX) was established with a basic fund of 3.5 billion Japanese yen including donations from 97 corporations in the Kansai region and contributions from six local governmental bodies.

● April 1, 2011

PREX became a public interest incorporated organization.

■ ACCESS



< Transportation >

● Kintetsu Railway, Uehommachi Station: 10-minute walk from Exit 14

● Subway (Sennichimae Line), Tanimachi 9-chome Station: 11-minute walk from Exit 10

● Subway (Tanimachi Line), Tanimachi 9-chome Station: 13-minute walk from Exit 5



WEB



Facebook



Twitter



Instagram



YouTube

PACIFIC RESOURCE EXCHANGE CENTER (PREX)

International House, Osaka, 2nd Floor, 8-2-6 Uehommachi, Tennoji-ku, Osaka-shi, 543-0001

TEL: (06) 6779-2850 FAX: (06) 6779-2840

<https://www.prex-hrd.or.jp>





As a public interest incorporated foundation, at Pacific Resource Exchange Center (PREX), we are committed to expanding human resource development and international exchange between developing countries and the Kansai region. We strive to leverage our mobility as a public interest incorporated foundation to expand collaborative networks with governments, corporations, municipalities, and organizations.

PREX MISSION

To promote international mutual understanding and cooperation through human development projects that contribute to economic and social development in developing countries, mainly in the Asia-Pacific region, as well as economic, cultural, and human exchange projects with these countries.

PREX 2030 VISION

Through fostering human resources, we will inspire innovation and contribute to the vision of a society in which people with different values can mutually accept and support one other.

PREX PROGRAMS

Pacific Resource Exchange Center (PREX) was first established in 1990 with a basic fund of 3.5 billion Japanese yen including donations from 97 corporations in the Kansai region and contributions from six local governmental bodies. We have now trained more than 19,000 graduates, from 156 countries and regions around the world. Our initiatives focus on leveraging our strengths in pursuit of new horizons in line with our mission and new vision created to mark 30 years since our founding. (Numbers are current as of October 2022)

01 Training and International Exchange for Government Officials and Business Managers in Developing Countries

JICA Commissioned Programs

We provide a series of training programs on management and policies for government officials and managers in developing countries. These programs are commissioned by Japan International Cooperation Agency (JICA, administering agency Official Development Assistance [ODA] Loans), major economic organizations, overseas counterparts, and other organizations, and focus mainly on industrial promotion such as business administration, promotion of SMEs, export promotion and marketing, environment, and regional development and tourism promotion.



Overseas Training and Exchange in Collaboration with Counterparts

At the request of our counterparts, we dispatch specialists qualified for the given issue or project and conduct on-site training at respective locations.



★The training program aims to promote exchange and mutual understanding through visits to corporations, local governments, and other organizations in the Kansai region, as well as the sharing of ideas or opinions at these sites and at exchange meetings.

★At PREX, we offer integrative support from program development through to implementation.

02 Training and Exchanges for International Students

On behalf of universities and other institutions, we offer a range of training and exchange programs for overseas students coming to study in Japan. These programs are designed to provide uniquely Japanese experiences that align with a specific program or topic.



04 Internationalization for Corporations in the Kansai Region

We have been commissioned by JICA Kansai to "support the operation of the JICA Collaboration Desk for public interest partnership projects." Our activities support the dissemination of information alongside providing individual consultations at the "JICA Collaboration Desk" located at Grand Front Osaka.



03 Training and Exchange for Foreign Employees in Japanese Corporations

Our training programs for foreign employees working in Japanese corporations leverage our experience in training human resources in developing countries. The program is designed to train foreign personnel working in Japanese corporations in response to globalization and the growing need for foreign human resources. These programs have received huge acclaim from participants.



05 Human Resource Network Establishment

At PREX, we conduct regular follow-up programs for ex-participants to promote and leverage networks between ex-participants and Japanese collaborators. These consist of our Alumni Association Follow-up Program and PREX Global Network Seminar Implementation Support Program.



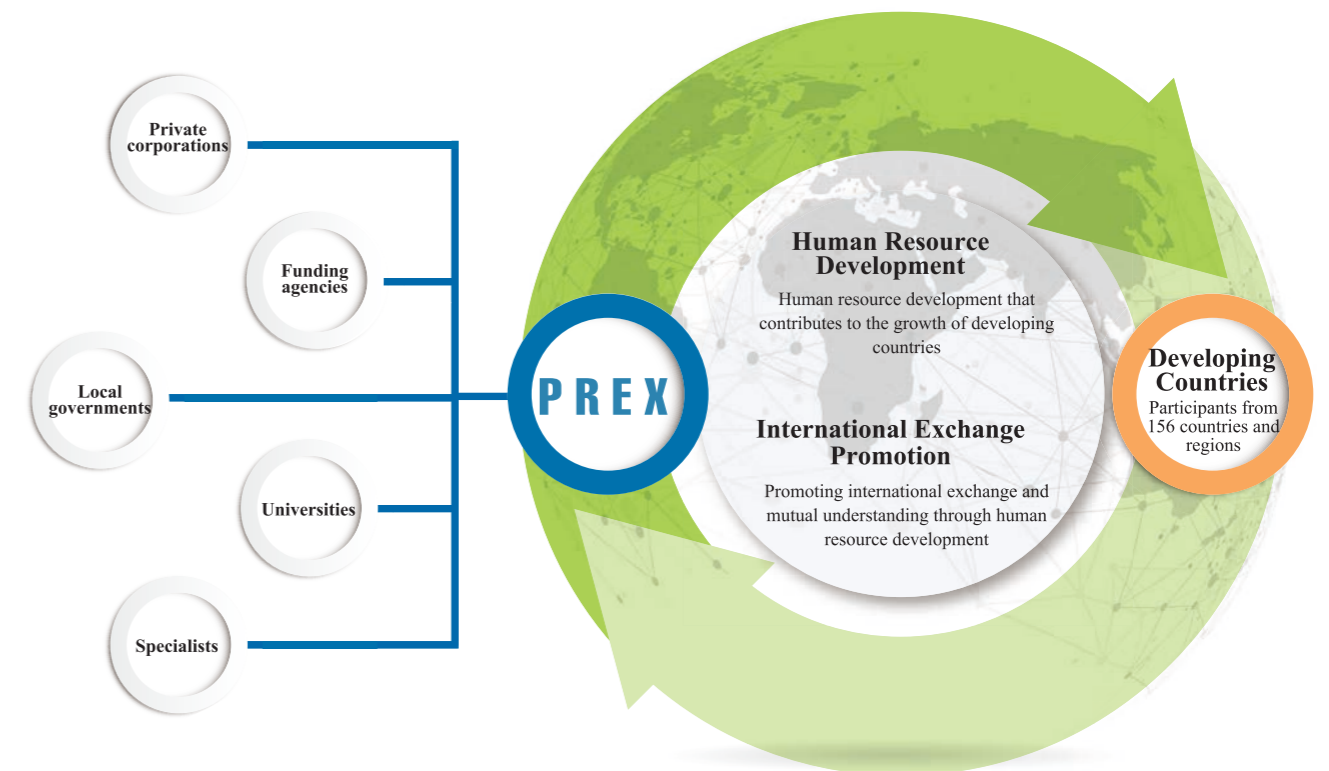
PREX PROGRAM COLLABORATION

Industry-government-academic collaboration of Kansai, Japan

Private corporations, funding organizations, local governments, and universities in the Kansai region continue to support our programs. At PREX, we pride ourselves on maintaining a neutral standpoint in which we can pursue our initiatives without restraint.

Highly Engaging Specialists and Instructors with Extensive Experience and Know-How

A full spectrum of lecturers and advisors—including executives from corporations, organizations, and government agencies; university personnel, and consultants—form the backbone of our training programs.



PREX Global Network

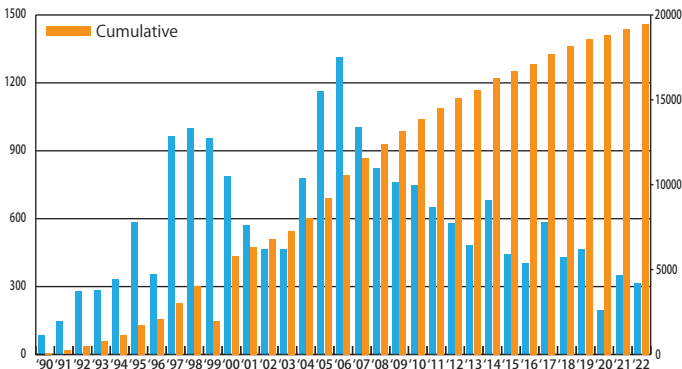


PREX trainees are government officials and corporate executives involved in industrial development in developing countries. Our PREX Global Network consists of about 2,220 trainees who have attended training in Japan from overseas and serves to continue exchanges between registrants and Japan after training completion. The training also provides opportunities for our Japan based collaborators to establish and continue relationships with trainees.



Number of participants by year

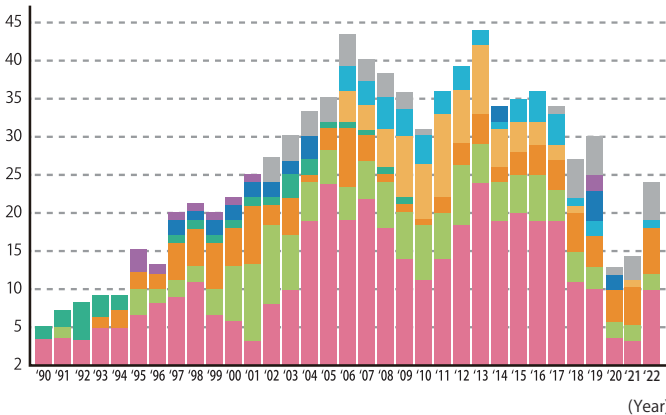
As of March 31, 2023



• PREX has held a total of 855 courses for seminars since its establishment in April 1990.
The total number of participants as of March 2022 was 19,477 from 157 countries and regions.

Seminars by subject

(Number of seminars)

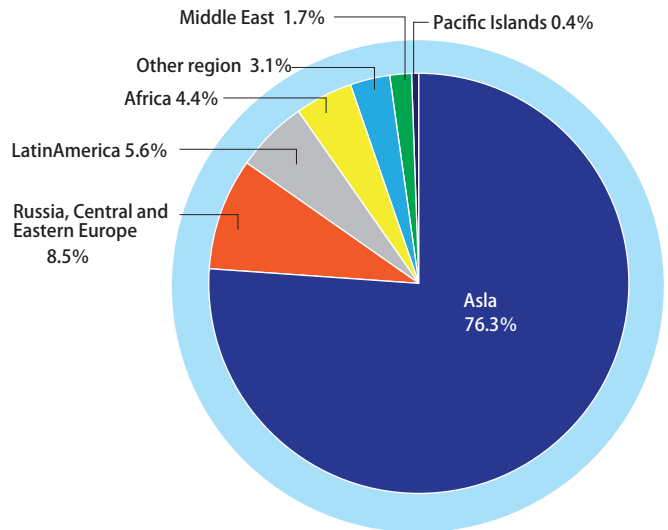


■ Business management ■ SME development ■ Export promotion and marketing
■ Promotion of market economy ■ Environment
■ Other industrial promotion ■ International exchange ■ Regional development and tourism
■ Others

• Based on the original purposes of the establishment of PREX to provide support to developing countries in human resource development for economic and industrial development and to promote international human exchanges in the Kansai region, we mainly held seminars with themes such as "Business management", "Small and medium sized enterprise development", and so on.

• We can conduct a wide range of seminars and human mutual interaction because Kansai is the base for many excellent companies from a variety of industries. Also noteworthy is the fact that many small and medium sized enterprises have been actively expanding their businesses. This is one of the reasons why our region attracts a great deal of attention from developing countries.

Seminar participants by region



• Of all participants, a predominant majority of 76.3 % came from Asia including East Asia, South West Asia, Central Asia and Caucasia. This was followed by Central and Eastern Europe, Russia, Latin America, Africa, and so on.

PREX's Approach to SDGs

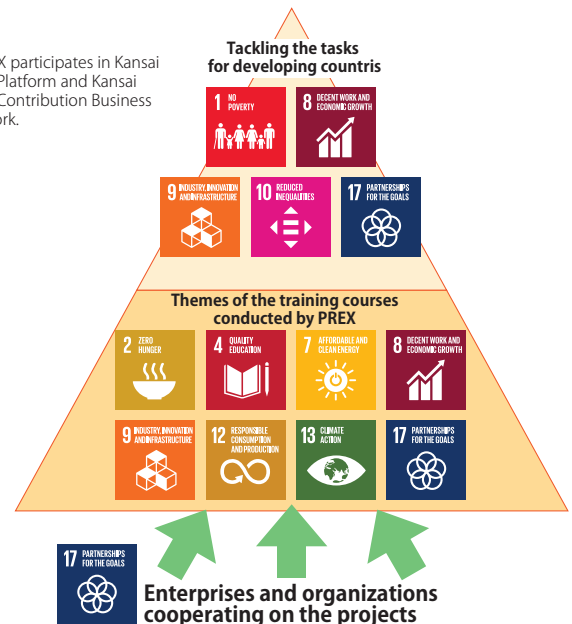
SDGs is the acronym for Sustainable Development Goals which are the international goals from 2016 to 2030. It consists of 17 goals and 169 targets to realize a sustainable world.

As you can see in the diagram on the right, PREX has been tackling the tasks for developing countries. To achieve SDGs, cooperation of the enterprises and organizations supporting PREX's activities is vital.

We have also been trying to create a comfortable work place in PREX for everyone and to reduce waste.

We will continue working actively to achieve SDGs.

※PREX participates in Kansai SDGs Platform and Kansai SDGs Contribution Business Network.



What we do in PREX



Members of Board of Directors

PACIFIC RESOURCE EXCHANGE CENTER

• Chairman

Kiyoshi OTSUBO
Representative Director, Chairman & CEO,
Rengo Co., Ltd.

• President

Yukiyoshi OKANO
Ex-President & Chief Operating Officer,
Daikin Industries, Ltd.

• Vice President

Masatoshi KIMATA
Special Corporate Adviser,
KUBOTA Corporation

• Directors

Y. HIRAOKA Executive Adviser,
The Kobe Chamber of Commerce and Industry
S. HIROSE Managing Director, Secretary General,
Kansai Keizai Doyukai (Kansai Association of Corporate Executives)
T. INADA Executive Officer, Toyobo Co., Ltd.
T. INOUE Director, Kansai Economic Federation
T. KITAMASU Deputy Senior General Manager, Osaka Secretarial Department,
SUNTORY HOLDINGS LIMITED
K. KURODA Member of the Board, Corporate Strategy Planning Department,
NIPPON TELEGRAPH AND TELEPHONE WEST CORPORATION
N. MIYAMOTO Executive Vice President, The Kansai Electric Power Co., Inc.
M. NAGATA General Manager, Economic & Industrial Division,
Kyoto Chamber of Commerce and Industry
T. NEGORO Director, International Division, Osaka Chamber of Commerce &
Industry
M. OGAWA Director, Panasonic Holdings Corporation
S. OYA Executive Director, KANSAI PRODUCTIVITY CENTER
F. TAKEGUCHI Senior Executive Officer, Member of the Board, OSAKA GAS
CO., LTD.
Y. OKAMOTO Senior Managing Director, Pacific Resource Exchange Center

• Auditors

S. HAGIO Chairman, Osaka International Forum
T. KISHIMOTO President, Osaka International House Foundation
T. SAKIMOTO PRESIDENT, KANSAI OSAKA 21ST CENTURY ASSOCIATION

• Members of the Council

H. ICHISAKA Senior Executive Director – International Relations, Department
of Civic and Cultural Affairs, Osaka Prefectural Government
M. IMAI Senior Vice Representative, ITOCHU Corporation
M. KAKIUCHI Executive Director, International Department, Office of the Mayor,
Kobe City Government
K. KAKUMOTO Deputy Chairman of the Board, Sumitomo Mitsui Banking
Corporation
T. KOBAYASHI Director General, Industry, Employment & International Affairs
Department, Hyogo Prefectural Government
K. KOKEGUCHI Director General for Ports Bureau, Kyoto Prefectural Government
Y. MATSUMOTO Managing Executive Officer, SUMITOMO MITSUI TRUST BANK,
LIMITED
Y. MIKASA Director and Executive Vice President, Nippon Life Insurance
Company
A. MORIYAMA Director for Business and International Promotion,
Economic Strategy Bureau, Osaka City Government
M. NAKATA Managing Executive Officer, Sumitomo Electric Industries, Ltd.
T. NISHIMATSU Senior Director, International and Multicultural Affairs Office, City
of Kyoto
S. OHNO Assistant General Manager for Japan Region,
Deputy General Manager, Kansai Office, SUMITOMO CORPORATION
M. SOUTOME Deputy President, MUFG Bank, Ltd.
M. TOMITA Executive Officer, General Manager, Osaka Branch, Marubeni
Corporation
H. TSUGA Managing Executive Officer Head of Office, Osaka Office,
NIPPON STEEL CORPORATION

• Supreme Advisers

M. FUJISAWA President, Kobe University
K. HISAMOTO Mayor, Kobe City Government
D. KADOKAWA Mayor, City of Kyoto
H. KAWASAKI Chairman, The Kobe Chamber of Commerce and Industry
M. MATSUMOTO Chairman, Kansai Economic Federation
N. MINATO President, Kyoto University
Y. MIYABE Co-Chairperson, Kansai Keizai Doyukai
(Kansai Association of Corporate Executives)
S. NISHIO President, Osaka University
T. NISHIWAKI Governor, Kyoto Prefectural Government
M. SAITO Governor, Hyogo Prefectural Government
S. TORII Chairman, Osaka Chamber of Commerce and Industry
Y. TSUKAMOTO Chairman, Kyoto Chamber of Commerce & Industry
K. YOSHIDA Director-General, National Museum of Ethnology

• Special Advisers

T. ACHIKITA President & CEO, Nankai Electric Railway Co., Ltd.
M. HASHIMOTO Chairman of the Board, Sumitomo Life Insurance Company
K. HASUWA President, Obayashi Corporation
K. IWATA President, Sumitomo Chemical Co., Ltd.
Y. KARASAWA Senior Advisor, Mitsui Sumitomo Insurance Co., Ltd.
T. KIJJIMA Counselor, West Japan Railway Company
T. KOBAYASHI Chairman of the Board, Kintetsu Group Holdings Co., Ltd.
M. KONDO General Manager, Osaka Branch, Toyota Tsusho Corporation
S. SASABE Senior Advisor, Bando Chemical Industries, Ltd.
G. SEN President, Kyoto City International Foundation
T. TAKENAKA Honorary Chairman of the Board, Takenaka Corporation
H. UENO Representative Director, Mitsubishi Tanabe Pharma Corporation
H. YASUHARA Representative Director, President and Corporate Officer,
Wacoal Holdings corp.
H. YOSHIKAWA Chairman, Osaka Foundation of International Exchange

• Advisors

S. KUWAYAMA President, The Association for Overseas Technical Cooperation
and Sustainable Partnerships (AOTS)

