

■Outline of PREX

Pacific Resource Exchange Center (PREX)

- Government Agency of Jurisdiction:  
The Cabinet Office
- Employees:  
22 persons
- Awards and Commendations Received:  
JICA, Award for Excellence in International Cooperation (2000)  
Kansai Economic Federation, Excellence Award (2008)  
Japan Ministry of Foreign Affairs, Foreign Minister’s Commendation (2008)  
Osaka City, Mayor’s Commendation for “Leading Company for Promoting Women in the Workforce”(2021)  
Kansai Economic Federation, "Kankeiren ASEAN Management Training Program” Letter of Appreciation (2021)  
Osaka Prefectural commendation for gender equal enterprises “Gender Equal Iki-iki Excellence Award”(2022)

■PREX History

- 1984  
The Kansai Association of Corporate Executives (KACE) facilitated a team to conduct research in the Pacific Ocean countries. KACE proposed that Japan focus international cooperation on human development and announced a plan to establish the "Management and Technology Exchange Center.”
- 1988  
The 6th Pacific Economic Cooperation Council (PECC) General Meeting in Osaka:  
The idea of establishing an industry-government-academia representative organization to facilitate human development cooperation in the Asia-Pacific was proposed by Kansai Economic Federation President, Mr. Uno. A preparatory committee and executive council for establishing the organization was created.
- April 26, 1990  
Obtained approval for establishment from the Minister of Foreign Affairs and the Minister of International Trade and Industry.  
Pacific Resource Exchange Center (PREX) was established with a basic fund of 3.5 billion Japanese yen including donations from 97 corporations in the Kansai region and contributions from six local governmental bodies.
- April 1, 2011  
PREX became a public interest incorporated organization.

■ACCESS



<Transportation>

- Kintetsu Railway, Uehommachi Station:10-minute walk from Exit 14
- Subway (Sennichimae Line), Tanimachi 9-chome Station: 11-minute walk from Exit 10
- Subway (Tanimachi Line), Tanimachi 9-chome Station: 13-minute walk from Exit 5



WEB



Facebook



Twitter



Instagram



YouTube

PACIFIC RESOURCE EXCHANGE CENTER (PREX)  
International House, Osaka, 2nd Floor, 8-2-6 Uehommachi,  
Tennoji-ku, Osaka-shi, 543-0001  
TEL: (06) 6779-2850 FAX: (06) 6779-2840  
<https://www.prex-hrd.or.jp>







As a public interest incorporated foundation, at Pacific Resource Exchange Center (PREX), we are committed to expanding human resource development and international exchange between developing countries and the Kansai region. We strive to leverage our mobility as a public interest incorporated foundation to expand collaborative networks with governments, corporations, municipalities, and organizations.

## PREX MISSION

To promote international mutual understanding and cooperation through human development projects that contribute to economic and social development in developing countries, mainly in the Asia-Pacific region, as well as economic, cultural, and human exchange projects with these countries.

## PREX 2030 VISION

Through fostering human resources, we will inspire innovation and contribute to the vision of a society in which people with different values can mutually accept and support one other.

## PREX PROGRAMS

Pacific Resource Exchange Center (PREX) was first established in 1990 with a basic fund of 3.5 billion Japanese yen including donations from 97 corporations in the Kansai region and contributions from six local governmental bodies. We have now trained more than 19,000 graduates, from 156 countries and regions around the world. Our initiatives focus on leveraging our strengths in pursuit of new horizons in line with our mission and new vision created to mark 30 years since our founding. (Numbers are current as of October 2022)

### 01 Training and International Exchange for Government Officials and Business Managers in Developing Countries

#### JICA Commissioned Programs

We provide a series of training programs on management and policies for government officials and managers in developing countries. These programs are commissioned by Japan International Cooperation Agency (JICA, administering agency Official Development Assistance [ODA] Loans), major economic organizations, overseas counterparts, and other organizations, and focus mainly on industrial promotion such as business administration, promotion of SMEs, export promotion and marketing, environment, and regional development and tourism promotion.



#### Overseas Training and Exchange in Collaboration with Counterparts

At the request of our counterparts, we dispatch specialists qualified for the given issue or project and conduct on-site training at respective locations.



- ★The training program aims to promote exchange and mutual understanding through visits to corporations, local governments, and other organizations in the Kansai region, as well as the sharing of ideas or opinions at these sites and at exchange meetings.
- ★At PREX, we offer integrative support from program development through to implementation.

### 02 Training and Exchanges for International Students

On behalf of universities and other institutions, we offer a range of training and exchange programs for overseas students coming to study in Japan. These programs are designed to provide uniquely Japanese experiences that align with a specific program or topic.



### 04 Internationalization for Corporations in the Kansai Region

We have been commissioned by JICA Kansai to "support the operation of the JICA Collaboration Desk for public interest partnership projects." Our activities support the dissemination of information alongside providing individual consultations at the "JICA Collaboration Desk" located at Grand Front Osaka.



### 03 Training and Exchange for Foreign Employees in Japanese Corporations

Our training programs for foreign employees working in Japanese corporations leverage our experience in training human resources in developing countries. The program is designed to train foreign personnel working in Japanese corporations in response to globalization and the growing need for foreign human resources. These programs have received huge acclaim from participants.



### 05 Human Resource Network Establishment

At PREX, we conduct regular follow-up programs for ex-participants to promote and leverage networks between ex-participants and Japanese collaborators. These consist of our Alumni Association Follow-up Program and PREX Global Network Seminar Implementation Support Program.



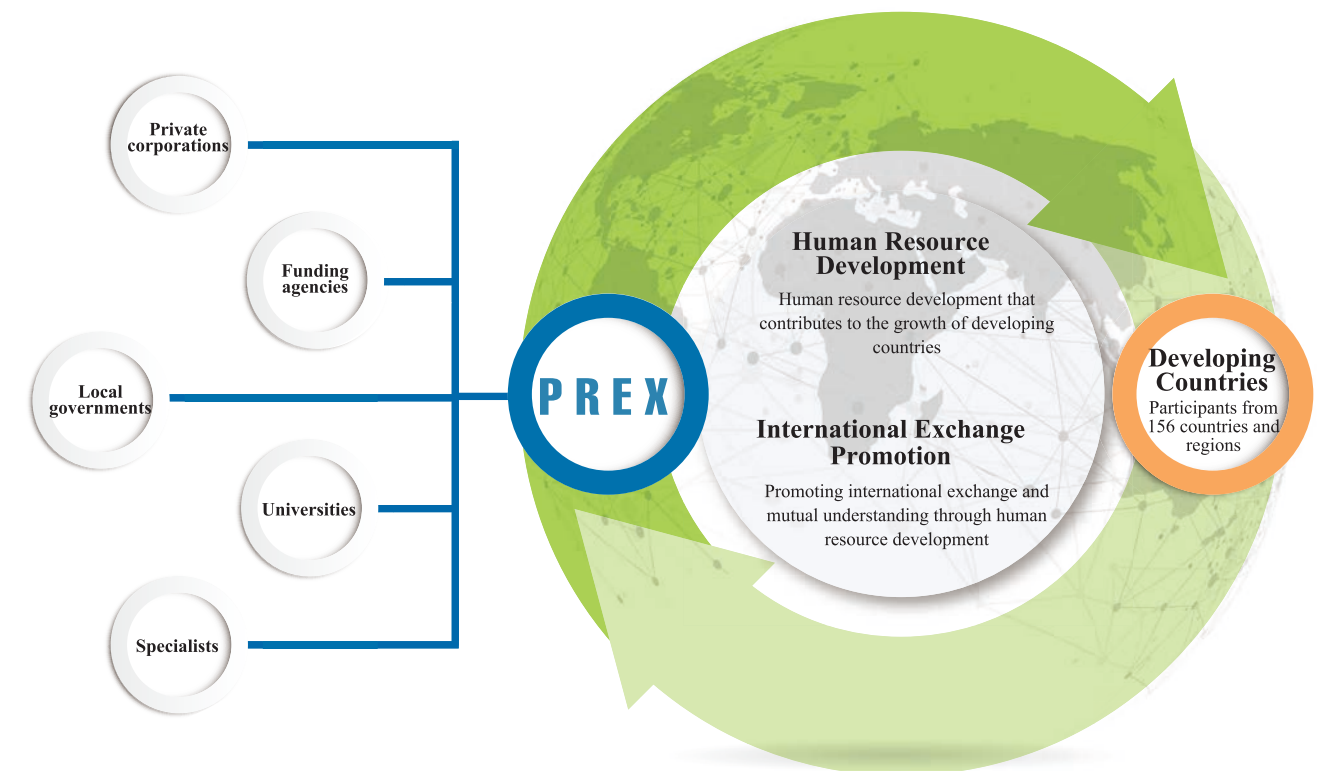
## PREX PROGRAM COLLABORATION

### Industry-government-academic collaboration of Kansai, Japan

Private corporations, funding organizations, local governments, and universities in the Kansai region continue to support our programs. At PREX, we pride ourselves on maintaining a neutral standpoint in which we can pursue our initiatives without restraint.

### Highly Engaging Specialists and Instructors with Extensive Experience and Know-How

A full spectrum of lecturers and advisors—including executives from corporations, organizations, and government agencies; university personnel, and consultants—form the backbone of our training programs.



### PREX Global Network

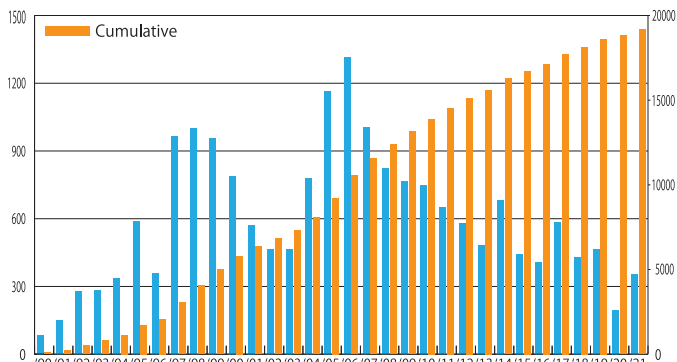


PREX trainees are government officials and corporate executives involved in industrial development in developing countries. Our PREX Global Network consists of about 2,220 trainees who have attended training in Japan from overseas and serves to continue exchanges between registrants and Japan after training completion. The training also provides opportunities for our Japan based collaborators to establish and continue relationships with trainees.



## Number of participants by year

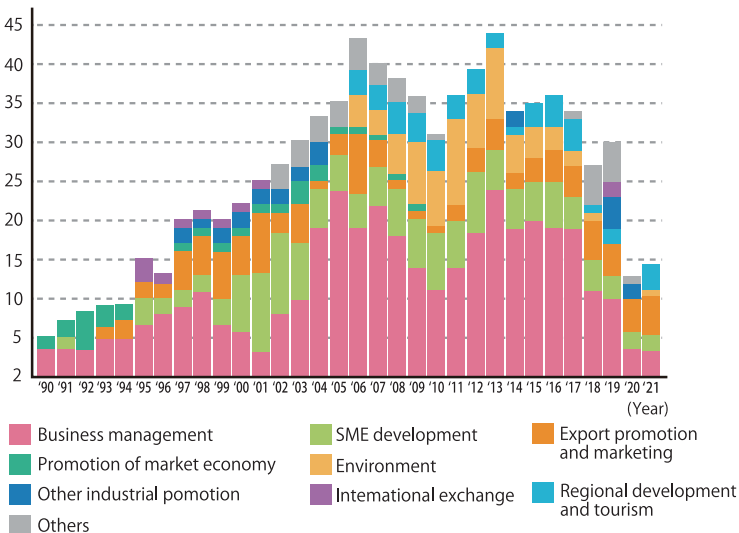
As of March 31, 2022



- PREX has held a total of 831 courses for seminars since its establishment in April 1990.
- The total number of participants as of March 2022 was 19,161 from 156 countries and regions.

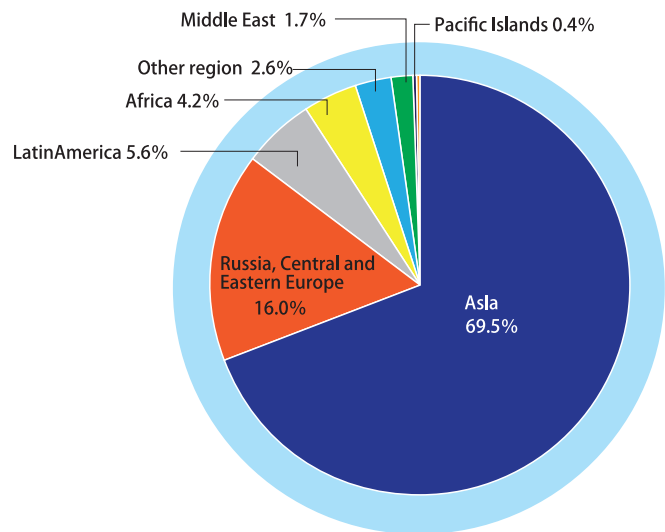
## Seminars by subject

(Number of seminars)



- Based on the original purposes of the establishment of PREX to provide support to developing countries in human resource development for economic and industrial development and to promote international human exchanges in the Kansai region, we mainly held seminars with themes such as "Business management", "Small and medium sized enterprise development", and so on.
- We can conduct a wide range of seminars and human mutual interaction because Kansai is the base for many excellent companies from a variety of industries. Also noteworthy is the fact that many small and medium sized enterprises have been actively expanding their businesses. This is one of the reasons why our region attracts a great deal of attention from developing countries.

## Seminar participants by region



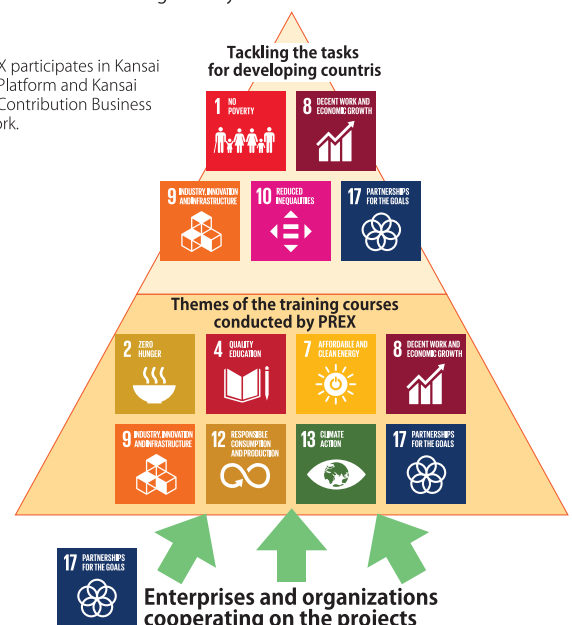
- Of all participants, a predominant majority of 69.5 % came from Asia including East Asia, South West Asia, Central Asia and Caucasia. This was followed by Central and Eastern Europe, Russia, Latin America, Africa, and so on.

## PREX's Approach to SDGs

SDGs is the acronym for Sustainable Development Goals which are the international goals from 2016 to 2030. It consists of 17 goals and 169 targets to realize a sustainable world.

As you can see in the diagram on the right, PREX has been tackling the tasks for developing countries. To achieve SDGs, cooperation of the enterprises and organizations supporting PREX's activities is vital. We have also been trying to create a comfortable work place in PREX for everyone and to reduce waste. We will continue working actively to achieve SDGs.

※PREX participates in Kansai SDGs Platform and Kansai SDGs Contribution Business Network.



What we do in PREX



# Members of Board of Directors

PACIFIC RESOURCE EXCHANGE CENTER

## • Chairman

Kiyoshi OTSUBO

Representative Director, Chairman & CEO,  
Daigo Co., Ltd.

## • President

Yukiyoshi OKANO

Ex-President & Chief Operating Officer,  
Daikin Industries, Ltd.

## • Vice President

Masatoshi KIMATA

Chairman and Representative Director,  
KUBOTA Corporation

## • Directors

S. GOTO	Director, General Manager of Industry Division, The Kobe Chamber of Commerce and Industry
S. HIROSE	Managing Director, Secretary General, Kansai Keizai Doyukai(Kansai Association of Corporate Executives)
T. INOUE	Director, Kansai Economic Federation
T. KITAMASU	Deputy Senior General Manager, Osaka Secretarial Department, SUNTORY HOLDINGS LIMITED
N. MIYAMOTO	Executive Vice President, The Kansai Electric Power Co.,Inc.
T. NEGORO	Director, International Division, Osaka Chamber of Commerce & Industry
T. NISHIDA	Director, General Manager, Economic & Industrial Division, Kyoto Chamber of Commerce and Industry
M. OGAWA	Director, Panasonic Holdings Corporation
S. OYA	Executive Director, KANSAI PRODUCTIVITY CENTER
M. OZAWA	Member of the Board Senior Vice President Corporate Strategy Planning Department, NIPPON TELEGRAPH AND TELEPHONE WEST CORPORATION
M. SHIRAI	Director and Executive officer, Toyobo Co.,Ltd.
F. TAKEGUCHI	Senior Executive Officer, Member of the Board, OSAKA GAS CO.,LTD.
Y. OKAMOTO	Senior Managing Director, Pacific Resource Exchange Center

## • Auditors

S. HAGIO	Chairman, Osaka International Forum
T. KISHIMOTO	President, Osaka International House Foundation
T. SAKIMOTO	PRESIDENT, KANSAI OSAKA 21ST CENTURY ASSOCIATION

## • Members of the Council

T. DANTOKU	Executive Director, International Department, Office of the Mayor, Kobe City Government
H. ICHISAKA	Senior Executive Director – International Relations, Department of Civic and Cultural Affairs, Osaka Prefectural Government
K. KAKUMOTO	Deputy Chairman of the Board, Sumitomo Mitsui Banking Corporation
Y. KASUI	Senior Managing Director, Sumitomo Electric Industries, Ltd.
T. KOBAYASHI	Director General, Industry, Employment & International Affairs Department, Hyogo Prefectural Government
K. KOKEGUCHI	Director General for Ports Bureau, Kyoto Prefectural Government
K. MATSUOKA	Member of the Board of Directors, Senior Managing Executive Officer, MUFG Bank, Ltd.
Y. MIKASA	Director, Executive Vice President, Nippon Life Insurance Company
T. NISHIMATSU	Senior Director, International and Multicultural Affairs Office, City of Kyoto
S. OHNO	Corporate Officer, Assistant General Manager for Japan Region Deputy General Manager, Kansai Office, SUMITOMO CORPORATION
M. ORIHARA	Director for Business and International Promotion, Economic Strategy Bureau, Osaka City Government
Y. SUZUKI	Vice Chairman, ITOCHU Corporation
N. TANAKA	Senior Managing Executive Officer, SUMITOMO MITSUI TRUST BANK, LIMITED
M. TOMITA	Executive Officer, General Manager, Osaka Branch, Marubeni Corporation
H. TSUGA	Managing Executive Officer Head of Office, Osaka Office, NIPPON STEEL CORPORATION

## • Supreme Advisers

M. FUJISAWA	President, Kobe University
K. HISAMOTO	Mayor, Kobe City Government
H. IETSUGU	Chairman, The Kobe Chamber of Commerce and Industry
K. IKOMA	Co-Chairperson, Kansai Keizai Doyukai (Kansai Association of Corporate Executives)
D. KADOKAWA	Mayor, City of Kyoto
M. MATSUMOTO	Chairman, Kansai Economic Federation
N. MINATO	President, Kyoto University
S. NISHIO	President, Osaka University
T. NISHIWAKI	Governor, Kyoto Prefectural Government
M. SAITO	Governor, Hyogo Prefectural Government
S. TORII	Chairman, Osaka Chamber of Commerce and Industry
Y. TSUKAMOTO	Chairman, Kyoto Chamber of Commerce & Industry
K. YOSHIDA	Director-General, National Museum of Ethnology

## • Special Advisers

T. ACHIKITA	Representative Director & CEO, Nankai Electric Railway Co., Ltd.
M. HASHIMOTO	Chairman of the Board, Sumitomo Life Insurance Company
K. HASUWA	President, Obayashi Corporation
K. IWATA	President, Sumitomo Chemical Co.,Ltd.
Y. KARASAWA	Senior Advisor, Mitsui Sumitomo Insurance Co., Ltd.
T. KIJIMA	Counselor, West Japan Railway Company
T. KOBAYASHI	Chairman of the Board, Group CEO, Kintetsu Group Holdings Co., Ltd.
M. KONDO	General Manager, Osaka Branch, Toyota Tsusho Corporation
S. SASABE	Senior Advisor, Bando Chemical Industries, Ltd.
H. SATO	Adviser, KOBE STEEL, LTD.
G. SEN	President, Kyoto City International Foundation
T. TAKENAKA	Honorary Chairman of the Board, Takenaka Corporation
H. UENO	Representative Director, Mitsubishi Tanabe Pharma Corporation
H. YASUHARA	Representative Director, President and Corporate Officer, Wacoal Holdings corp.
H. YOSHIKAWA	Chairman, Osaka Foundation of International Exchange

## • Advisors

S. KUWAYAMA	President, The Association for Overseas Technical Cooperation and Sustainable Partnerships (AOTS)
-------------	--

